

CAMPOMATIC

AF90T55 AIR FRYER



Made in China



INSTRUCTION MANUAL

Caution: Read and follow all safety and operating instruction before first use of this product.

Campomatic S.R.L. Via Configliachi 5/B . 35031, Abano Terme (Padova), ITALIA
WWW.CAMPOMATIC.COM

Important safeguards

When using electrical appliances, basic safety precautions should always be followed, including the following:

- Read all instructions
- Do not touch hot surfaces. Use handles or knobs. Use oven mitts or potholders
- To protect against electric shock do not immerse cord, plugs, or appliance in water or other liquid
- This appliance may be used and cleaned by children aged 8 and older or by persons with reduced physical, sensory or mental capabilities, or lack of experience and knowledge only if they have been given supervision or instruction concerning use of the appliance by a person responsible for their safety
- Children should be supervised to ensure that they do not play with the appliance
- Unplug from outlet when not in use and before cleaning. Allow to cool before putting on or taking off parts, and before cleaning the appliance
- Do not operate any appliance with a damaged cord or plug, or after the appliance malfunctions, or has been damaged in any manner. Bring it to a qualified technician for examination, repair or electrical or mechanical adjustment

NOTE: do not attempt to repair the unit yourself. This will void the warranty.

- The use of accessory attachments not recommended by the appliance manufacturer may cause injuries
- Do not use outdoors
- Do not let cord hang over edge of table, counter or touch hot surfaces
- Do not place on or near a hot gas or electric burner, or in a heated oven
- Extreme caution must be used when moving an appliance containing hot oil or other hot liquids
- To disconnect, press and pull any active fryer basket(s) out of the Air Fryer body.
- Remove plug from wall outlet
- Do not use the appliance for other than intended use
- Make sure the crisping tray is in place before adding food to be air fried
- Always make sure any active fryer basket is fully inserted and locked into the front of the Air Fryer before operation

WARNING: air fryer will not operate unless the active fryer baskets are fully closed.

CAUTION: after hot air frying, roasting, broiling, baking, or reheating, the fryer baskets, crisping trays (if used) and the cooked foods are hot. Extreme caution must be used when handling the hot Air Fryer baskets and crisping trays.

FOR HOUSEHOLD USE ONLY

SAVE THESE INSTRUCTIONS

Additional important safeguards

CAUTION

- This appliance generates heat and may release steam during use. Proper precautions must be taken to prevent the risk of burns, fires, or other injury to persons or damage to property
- This appliance is hot during operation and retains heat for some time after turning it off. Always use oven mitts when handling hot materials and allow metal parts to cool before cleaning. Do not place anything on top of the appliance while it is operating or while it is hot
- All users of this appliance must read and understand this instruction manual before operating or cleaning this appliance
- The cord to this appliance should be plugged into a 220-240V AC electrical outlet only
- If this appliance begins to malfunction during use, press and pull any active fryer basket(s) out of the body. Remove plug from wall outlet. Do not use or attempt to repair the malfunctioning appliance and contact customer service
- Do not immerse power cord in any liquid. If the power cord to this appliance is damaged, it must be replaced
- Keep the cord out of reach from children and infants to avoid the risk of electric shock and choking
- Place the Dual Basket Air Fryer on a flat, stable, heat-resistant work area
- Do not obstruct the air outlet or air inlets on the back and sides of the Air Fryer, with any objects. Avoid escaping steam from the air outlet during air frying
- Keep the appliance at least 4 inches 10cm away from walls or other objects during operation
- Always use each fryer basket handle to remove each fryer basket

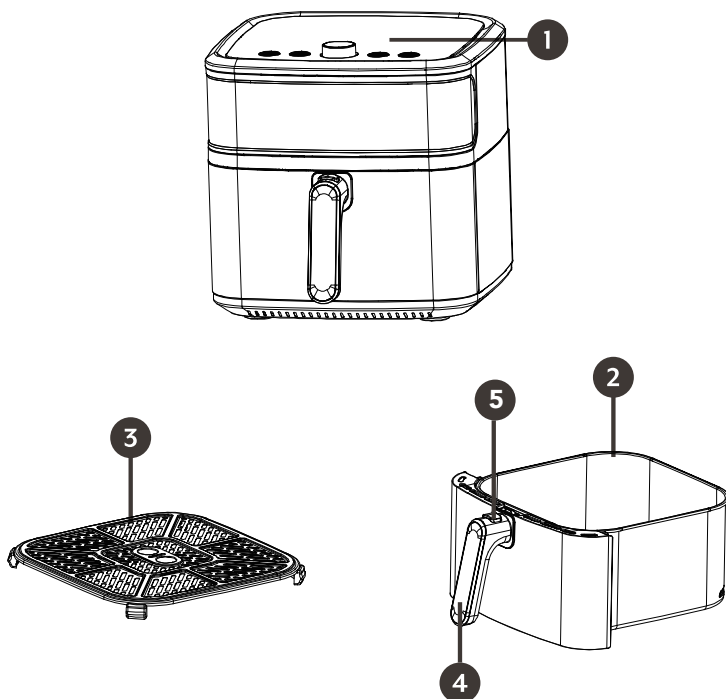
WARNING: under or over-filling the fryer basket may damage the Air Fryer and could result in serious personal injury.

- Never move a hot Air Fryer or an Air Fryer containing hot food. Allow it to cool before moving

WARNING:

- This air fryer should not be used to boil water
- This air fryer should never be used to fry previously fried foods

WHAT'S IN THE BOX



1 DIGITAL TOUCHSCREEN CONTROLS

2 AIR FRYER BASKET

- 9 Liter
- Removable Basket with Handle
- Must always be cleaned after each use

3 CRISPER BAKING TRAY

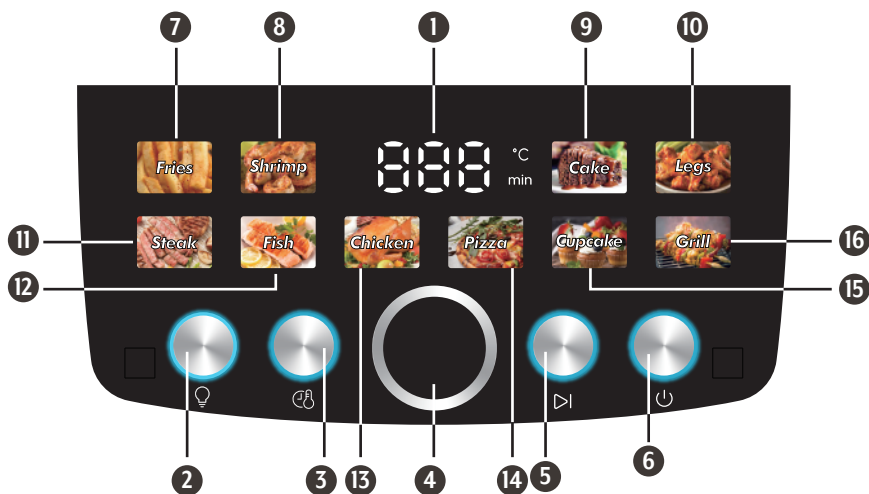
- Place good on removable Tray
- Must always be cleaned after use
- Dishwasher Safe

4 AIR FRYER BASKET HANDLE

5 RELEASE BUTTON

GETTING TO KNOW YOUR AIR FRYER

Digital Touchscreen Controls



- | | |
|---------------------------------------|------------|
| 1 TEMPERATURE THEN TIME DISPLAY | 9 CAKE |
| 2 LIGHT CONTROL | 10 LEGS |
| 3 SET THE TEMPERATURE AND TIME BUTTON | 11 STEAK |
| 4 CONTROL DIAL | 12 FISH |
| 5 START /PAUSE CONTROL | 13 CHICKEN |
| 6 POWR ON | 14 PIZZA |
| 7 FRIES | 15 CUPCAKE |
| 8 SHRIMP | 16 GRILL |

ADJUST THE TEMPERATURE /TIME :

Press to Set the TEMPERATURE and Time button , then ROTISSERIE the Control Dial to set the Temperature and Time , enable you to add or decrease cooking TEMPERATURE 5°C and the add or decrease cooking Time is 1Min (the Temperatue range is 70-200°C, The Time range is 1-60Min). Then press the control dial to confirm or will be confirmed directly after 5 second.

POWER ON MODE

- Plug in and switch on the Air Fryer at the socket, the appliance will beep
- Press the ON/OFF power icon once, it will illuminate the full control panel.
- If no icons on the control panel are touched after 5 minutes, the appliance go into standby mode.

- Press the On/OFF power icon at any time during the cooking process will shut off the appliance and it will enter standby mode. Nothing will be illuminated on the control panel except the on/off power icon.

STANDBY MODE

- When only the ON/OFF power icon is illuminated on the control panel the appliance is in standby mode.
- Press the On/OFF power icon to activate the appliance, there will be a beep.
- If no icons on the control panel are touched after 5 minutes, it will go back to standby mode. Likewise, if you have paused or opened the crisper drawer and there is no operation within 5 minutes, it will go back to standby mode.

SELECTING THE PRE-SET COOKING FUNCTION

- ROTISSERIE the Control Dial icon. (FRIES, SHRIMP, CAKE, LEGS, STEAK, FISH, CHICKEN, PIZZA, CUPCAKE, GRILL) and the appliance will skip through the pre-set cooking functions to your desired setting. The selected pre-set cooking function will flash.
- When you have selected the pre-set cooking function, on the LED digital display the default temperature and time for that setting will flash and alternate between the two.

START /PAUSE CONTROL

- After you choose the MENU, Then press the START /PAUSE CONTROL ,the machine will be working ,press again, the machine will be pause

LIGHT

- The LIGHT icon can be pressed at any stage to turn on the light to illuminate the cooking cavity.
- If the appliance is paused and the crisper drawer is opened the light turns off.
- When the crisper drawer is then closed you will need to press the LIGHT icon to turn on the light.

OPENING THE CRISPER DRAWER

- To open the crisper drawer at any stage, Pull out the drawer directly.
- If the crisper drawer is opened during the cooking process, the appliance will beep 1 times, the heating element, fan and light will stop working.
- When you close the crisper drawer during the cooking process the appliance will carry on working. You will need to touch the LIGHT icon if you wish the cooking cavity to be illuminated.

END OF COOKING PROCESS

- When the cooking process is complete the LED display will show 'End' and the appliance will beep 5 times.
- The appliance will return to standby mode after 1 minute, the fan will run from 20 seconds and then stop.

SHAKE FUNCTION

- The shake function is only functional if the cooking time is greater than 6 minutes.
- When the cooking time is two-thirds of the way, the appliance will beep 2 times for 10 second and the LED digital display will show "SHK" Except the CAKE,PIZZA,CUPCAKE.
- Remove the crisper drawer, shake and then replace, the appliance will carry on cooking. "SHK" will disappear off the LED digital display and it will continue to display and alternate between the temperature and time.
- After the appliance has beeped 2 times after 10 second, the LED digital display will not continue to display 'SHK' and the time remaining will alternate if you do not open the crisper drawer.
- During the cooking process, if you adjust the time, the appliance will beep 2 times for 10 second and the LED digital display will show "SHK" two-thirds of the way through the newly updated time.

PRE-PROGRAMMED COOKING SELECTIONS

	MENU	DEFAULT TEMP (°C)	ADJUSTABLE TEMP (°C)	TIME (MIN)	ADJUSTABLE TIME (MIN)	OVERTURN
1	FRIES	200	70~200	24	1~60	Y
2	SHRIMP	180	70~200	13	1~60	Y
3	CAKE	150	70~200	6	1~60	N
4	LEGS	200	70~200	25	1~60	Y
5	STEAK	200	70~200	18	1~60	Y
6	FISH	200	70~200	18	1~60	Y
7	CHICKEN	200	70~200	35	1~60	Y
8	PIZZA	180	70~200	12	1~60	N
9	CUPCAKE	150	70~200	20	1~60	N
10	GRILL	200	70~200	20	1~60	Y

TROUBLESHOOTING

PROBLEM	POSSIBLE CAUSE	SOLUTION
The air fryer does not work	The appliance is not plugged in.	Plug the appliance into an earthed wall socket.
	A drawer or cooking mode has not been selected.	Select the required drawer and cooking mode by pressing the corresponding buttons on the unit's control panel.
	The Start/Stop key has not been pressed.	Press the Start/Stop key.
	The drawers are open and the selected function is paused.	Close the drawers to automatically resume the selected function.
The drawers will not slide inside the unit properly.	There is too much food in the drawers.	Take care not to overfill the drawers.
The fried ingredients are not done.	Too much food has been added to the air fryer.	Put smaller batches of ingredients in the air fryer. Smaller batches are fried more evenly.
	The set temperature is too low.	Set to an appropriate temperature or select the appropriate pre-set program from the unit's control panel.
	The cooking time is too short.	Set an appropriate cooking time or select the appropriate pre-set program from the unit's control panel.
Fresh fries are fried unevenly in the air fryer.	Wrong type of potatoes used.	Use fresh potatoes and make sure they stay firm during frying.
	The potato sticks were not rinsed adequately before frying.	Rinse the potato sticks properly to remove starch from the outside.
Fried snacks are not crispy or evenly fried when they come out of the air fryer.	Some food materials have to be fried with oil.	Brush a thin layer of oil on the surface of the food first, then start to fry it.
	Wrong type of snacks used.	Use oven snacks or lightly brush some oil onto the snacks for a crispier result.
	Food is stuck together or not in an even layer.	Shake or turn the food periodically through the cooking process.
Fresh fries are not crispy when they come out of the air fryer.	The crispiness of the fries depends on the amount of oil and water in the fries.	Make sure you dry the potato sticks properly before you add the oil. Cut the potato sticks smaller for a crispier result. Add slightly more oil for a crispier result.
The appliance is smoking.	The ingredients have a high oil content.	Smoking will be normal.
	The appliance contains grease from a previous use.	White smoke is caused by grease heating up inside the fryer. Clean the appliance properly after each use.
The food is burned	An inappropriate temperature has been set.	Follow the suggested settings or food manufacturer's recommendations.
	The food was added before pre-heating was complete.	Add food to the appliance only once pre-heating is completed.
	The food was cooked for too long.	Check on the progress of the food periodically throughout the cooking process.
	The food was left in the appliance after the cooking time had elapsed.	Remove the food from the appliance as soon as the cooking time has elapsed.